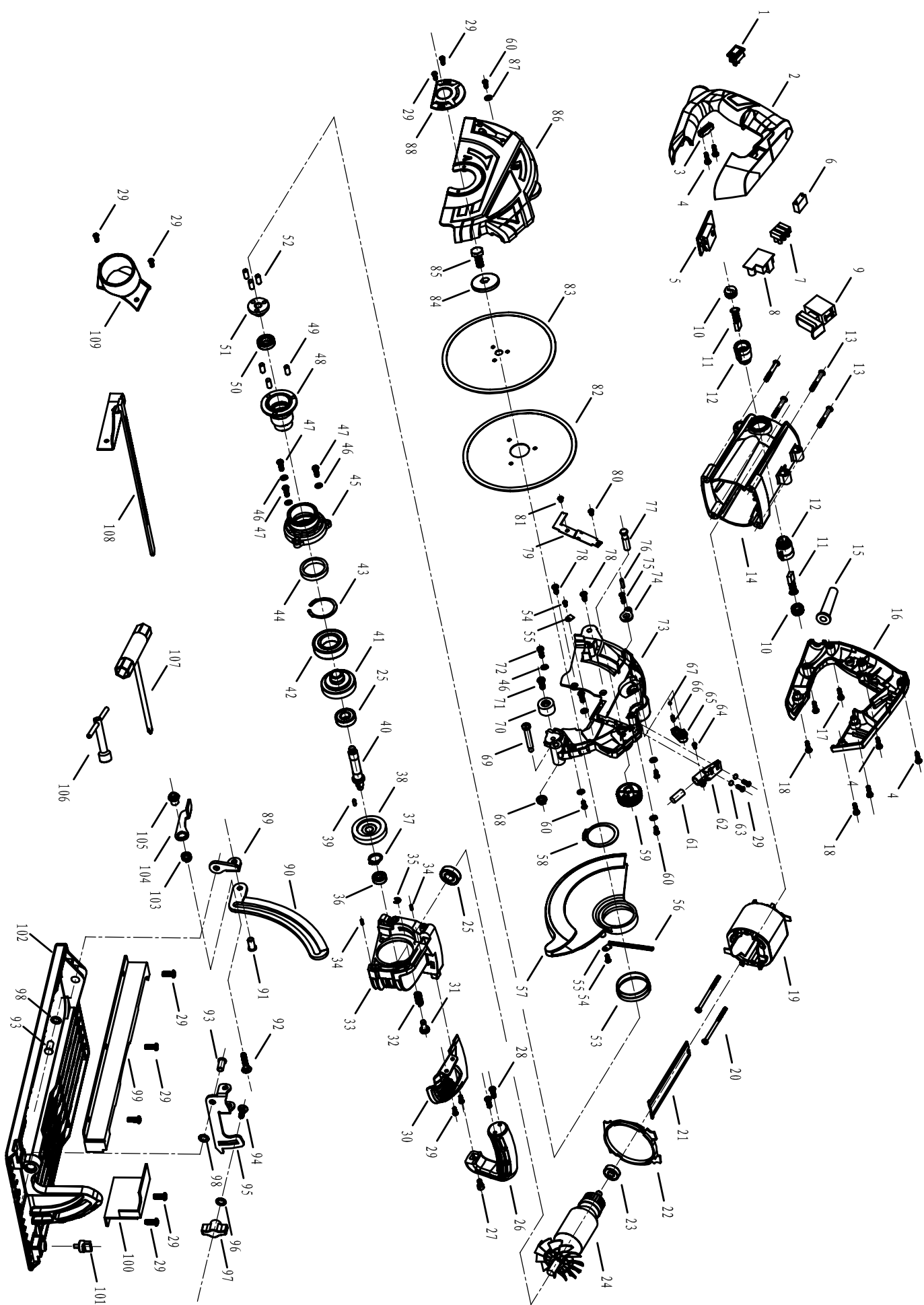




XWS036 METALLISAHA 1450W 160MM / METAL CUTTING SAW 1450W
M1Y-DU10-160

Varaosatunnus / Spare part code XWSV **esim. / e.g.** XWSV036-12 **(-12=pos.no.)**

M1Y-DU10-160电圆锯爆炸图230V



M1Y-DU10-160电圆锯爆炸图清单230V

序号Explosion drawing no.	DESCRIPTION
1	Laser switch
2	Right handle
3	Wire located set
4	Screw ST4*16
5	Overload protector
6	Capacitance 0.22 μ f
7	Connection pole
8	safety isolating transformer
9	Switch
10	Carbon brush cover
11	Carbon brush
12	Carbon brush holder
13	Screw ST5*36
14	Housing
15	Cable sleeve
16	Left handle
17	Screw ST4*14
18	Screw ST4*20
19	Stator assembly
20	Screw ST4*70
21	Housing spile
22	Winding guard ring
23	Bearing 608
24	Rotor assembly
25	Bearing 6001
26	Auxiliary handle
27	Screw M5*10
28	Screw ST5*16
29	Screw M4*8

30	Protective board
31	Shaft lock button
32	Shaft lock spring
33	reduction box
34	Spring pusher 3*8
35	Opening ring 5
36	Bearing 607
37	Snap ring 10
38	Gear 1
39	Flat washer 3*8
40	Output shaft
41	Gear 2
42	Bearing 6005
43	Collar 38
44	Dust ring
45	Ball bearing
46	Spring washer 5
47	Screw M5*14
48	Big lower clamping plate
49	Big lower clamping plate shaft
50	Bearing 6901
51	Small lower clamping plate
52	Small lower clamping plate shaft
53	Guard bushing
54	Screw M3*6
55	Spring located set

√

序号Explo sion drawing no.	DESCRIPTION
56	Mobile guard pull spring
57	Mobile guard
58	Snap ring 42
59	Candles adjustment knob
60	Screw M4*12
61	Laser head
62	Laser holder
63	Flat washer 4
64	Screw ST3*8
65	Guard limit button
66	Guard limit button spring
67	Steel ball 4
68	Tighted screw M6
69	Connection screw
70	Prevention back washer
71	Screw M6*14
72	Screw M5*16
73	Left guard cover
74	Guard limit lump
75	Screw ST4*12
76	Guard limit shaft
77	Candles adjustment shaft
78	Screw M5*12
79	Cover line board
80	Screw M4*6
81	Screw M4*7
82	Saw balde 160 -B
83	Saw balde 161 -A
84	Upper clamping plate

85	Saw blade clamping screw
86	Right guard cover
87	Spring washer 4
88	Cover board
89	Depth bracket connection board
90	Depth bracket
91	Fulcrum rivet
92	Depth clamping screw
93	Bracket rivet
94	Carriage screws M6*22
95	Angle bracket
96	Clamping washer
97	Table clamping knob
98	Red steel paper washer
99	Head baffle
100	Back baffle
101	Guider clamping screw
102	Baseplate
103	Depth clamping spring
104	Depth clamping spanner
105	Depth clamping lever
106	Sleeve spanner S=10
107	Sleeve spanner S=14
108	Guider
109	Dustarrest pipe