



Product 213509



213509 Mounting bracket

Center mount, Extra strength mounting platform.

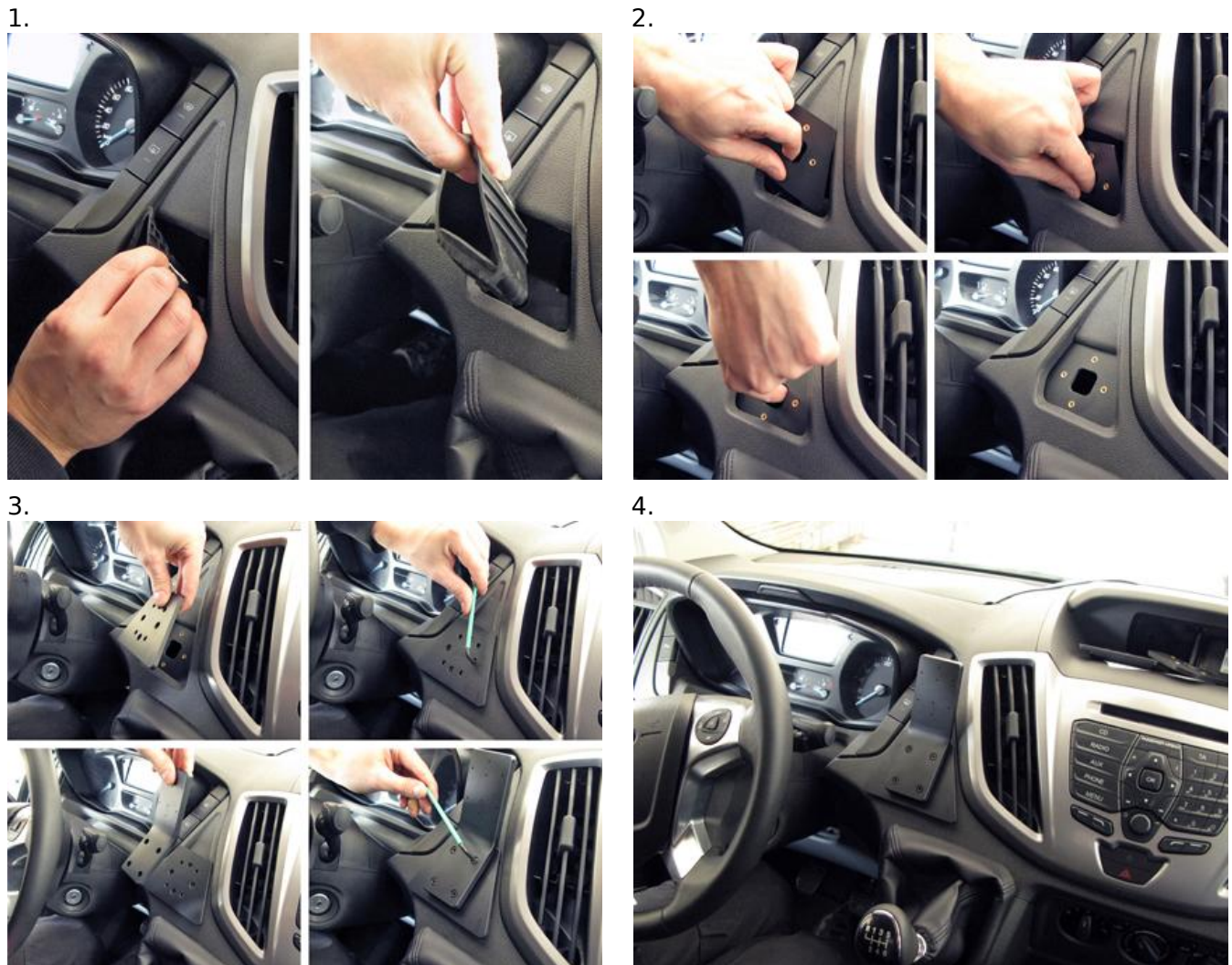
Extra strength mounting platform for installation of heavier devices. You can keep your device in a holder or attach it directly onto the mounting platform. The placement is optimized for touch screens, PDAs, taximeter screens and printers. You will have your device within easy reach, safe and convenient! The installation is quick and easy and will not damage the interior. Detailed installation instructions included.

EAN: 7320282135096

Item no 213509 fits:

Ford Transit 14-18 (For all countries)

INSTALLATION INSTRUCTIONS



Please read the instructions and look at the pictures carefully before installing the mounting bracket.

This product consists of three parts:

Part 1 - Base part.

Part 2 - Middle plate.

Part 3 - Mounting plate.

1. Squeeze together the edges of the rubber inlay and pull it out from the storage compartment.
2. Insert the base part into the storage compartment hole, with the long pointy edge facing downward/forward so it goes first into the hole. Turn the base part sideways into a vertical position and pull it toward you/upward so it hooks into place inside the hole.
3. Place the middle plate onto the base part so the holes match. Screw the middle plate onto the base part using the enclosed screws. Place the mounting plate onto the middle plate so the holes match. Screw the mounting plate onto the middle plate using the enclosed screws.
4. The mounting bracket is in place.