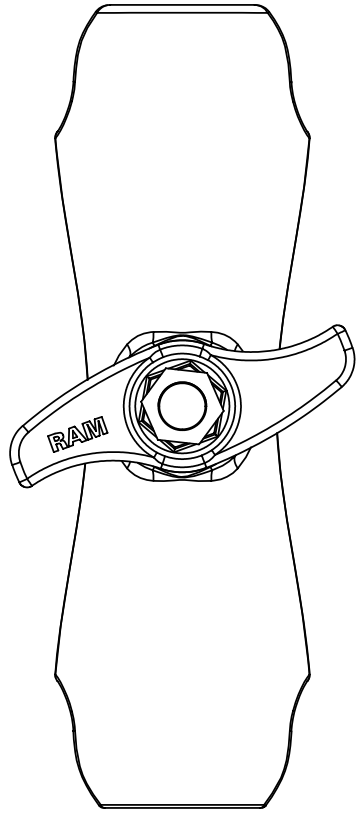
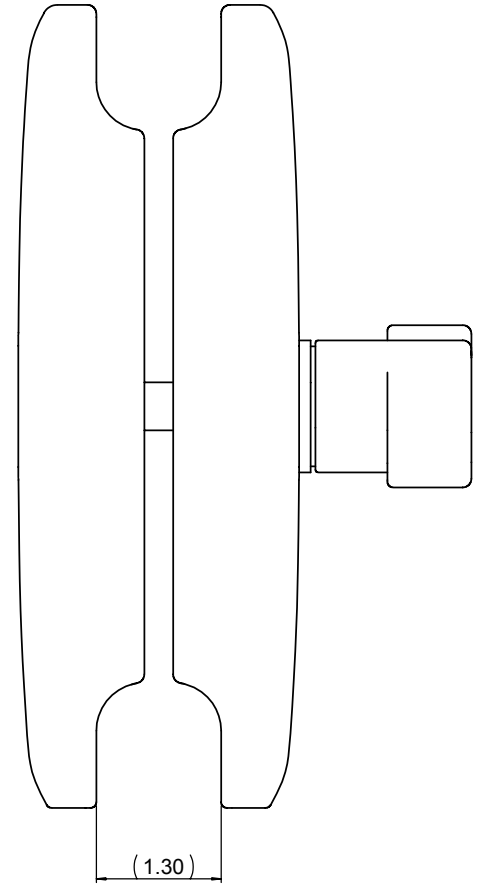
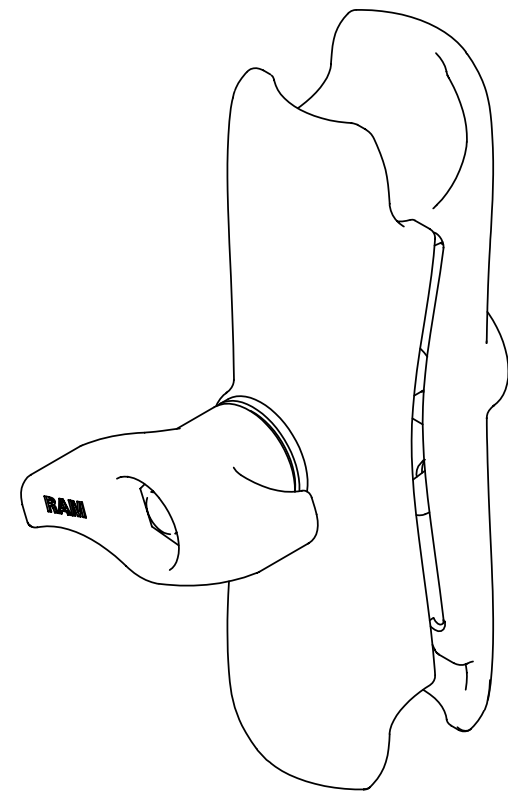


THE INFORMATION CONTAINED IN THIS DRAWING IS THE SOLE PROPERTY OF NATIONAL PRODUCTS INC. ANY REPRODUCTION IN PART OR WHOLE WITHOUT THE WRITTEN PERMISSION OF NATIONAL PRODUCTS INC. IS PROHIBITED.

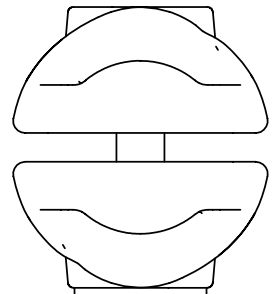
REV.		DESCRIPTION	DATE	APPROVED



6 7/8" BALL CENTERS



(1.30)



(1.63)

(3.57)

(0.88)

UNLESS OTHERWISE SPECIFIED DIMENSIONS ARE IN INCHES TOLERANCES ARE: FRACTIONS DECIMALS ANGLES ± 1/32 .XXX ± .06 ± 1 DEG. .XXX ± .030	C-AD GENERATED DRAWING. DO NOT MANUALLY UPDATE		NATIONAL PRODUCTS INC.	
	APPROVALS	DATE	RAM DOUBLE SOCKET ARM FOR 2.25" DIA RUBBER BALLS	
DRAWN	JDC	04/20/01	PART NO. RAM-D-201	
CHECKED	CMR	04/20/01	REV. C	
MATERIAL	ALUMINUM	RESP ENG	SCALE 1 TO 1	
FINISH	BLACK POWDER COAT	MFG ENG	CAD FILE: RAMD201	
DO NOT SCALE DRAWING	QUAL ENG	SHEET 1 OF 1		