

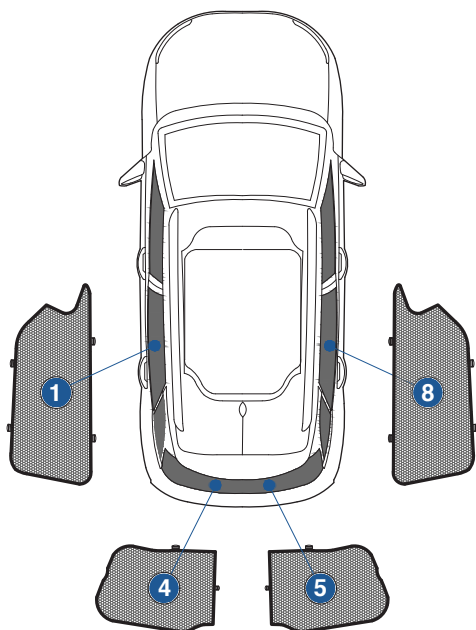
Installation Manual

CITROEN C4 CACTUS 5DR
CIT-C4CAC-5-A



COMPONENTS INCLUDED

SHADES



FIXING CLIPS



CL-M12 x 2



CL-P02 x 8



CL-M14 x 1



CL-W01 x 1

Side Shade Installation

CITROEN C4 CACTUS 5DR

CIT-C4CAC-5-A

COMPONENTS NEEDED:



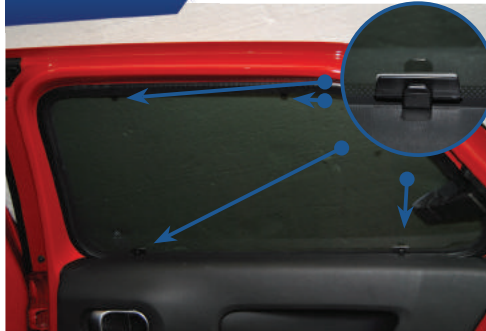
STEP #1

CLEAN THE AREA WHERE CLIPS ARE TO BE MOUNTED (AS IN STEP 2) WITH THE SURFACE CLEANER SACHET PROVIDED



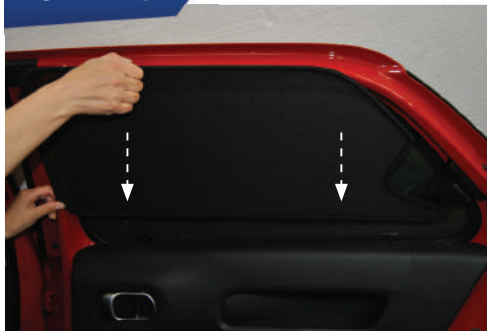
STEP #2

PRESS THE CLIPS FIRMLY INTO PLACE AND ALLOW TO DRY FOR 20 MINUTES



STEP #3

POSITION THE SIDE SHADES



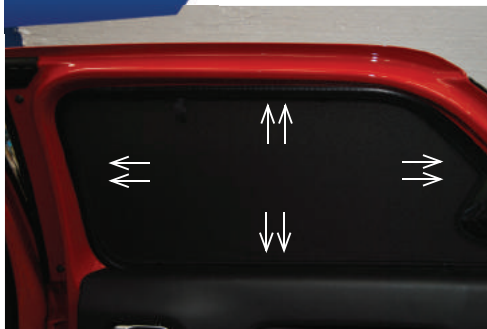
STEP #4

ATTACH THE SHADES TO THE CLIPS



STEP #5

ENSURE SECURELY FITTED IN PLACE



CAR
SHADES

Rear Shade Installation

CITROEN C4 CACTUS 5DR
CIT-C4CAC-5-A

COMPONENTS NEEDED:



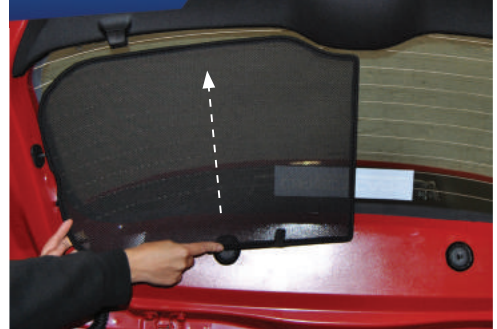
STEP #1

ATTACH CLIPS ON SHADE EDGE



STEP #2

POSITION THE REAR SHADE



STEP #3

INSERT CLIPS BEHIND INTERIOR TRIM



STEP #4

REPEAT THE PROCESS ON OTHER SHADE



STEP #5

ENSURE SECURELY FITTED IN PLACE

