

Installation Manual

CITROEN C3 PICASSO
CIT-C3PI-5-A



Shades



Side Shades



Port Shades



Tailgate Shades

Fixing Clips



CL-M02 x 6



CL-P02 x 4



CL-M03 x 6



CL-M14 x 1



CL-W01 x 1



Installation

CITROEN C3 PICASSO
CIT-C3PI-5-A

Components Needed



Side Shades



CL-M03 x 4



CL-P02 x 4



CL-W01 x 1

Side Shade Installation

STEP 1



STEP 2

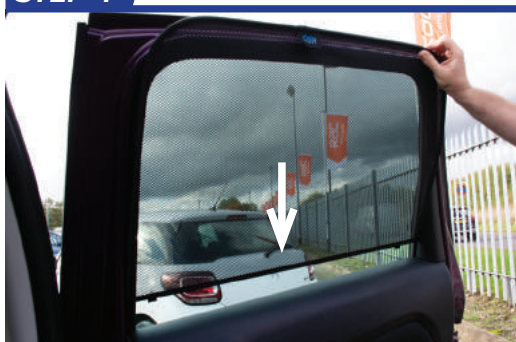


STEP 3



Press and hold clips in place for 30 Seconds

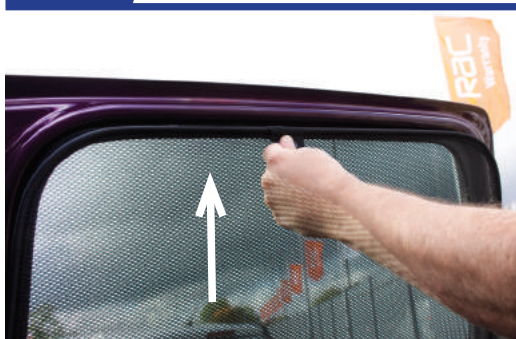
STEP 4



STEP 5



STEP 6



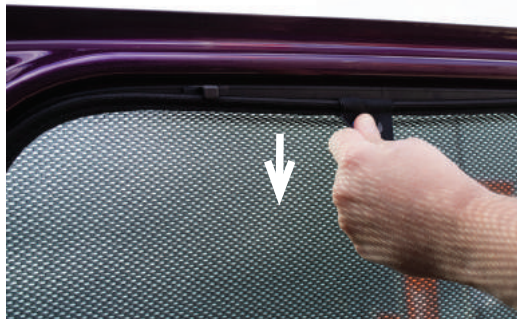
Installation

CITROEN C3 PICASSO
CIT-C3PI-5-A



Side Shade Installation

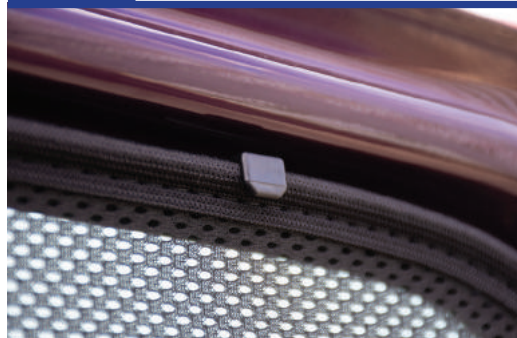
STEP 7



STEP 8



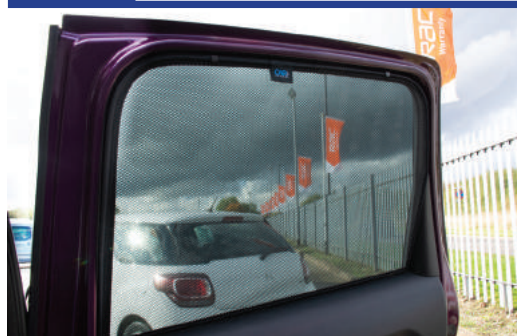
STEP 9



STEP 10



STEP 11



Repeat this whole process for the other side.

Installation

CITROEN C3 PICASSO
CIT-C3PI-5-A

Components Needed



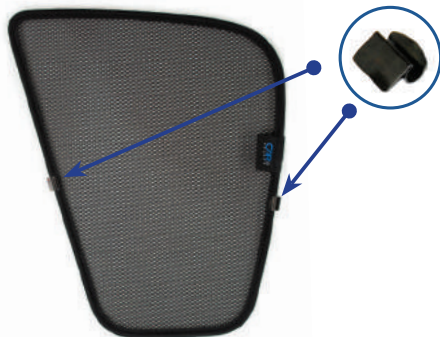
Port Shades



CL-M02 x 4

Port Shade Installation

STEP 1



STEP 2



STEP 3



STEP 4



STEP 5



STEP 6



Repeat this whole process for the other side.

Installation

CITROEN C3 PICASSO
CIT-C3PI-5-A

Components Needed



Tailgate Shades



CL-M03 x 2



CL-M14 x 1



CL-M02 x 2

Tailgate Shade Installation

STEP 1



STEP 2



STEP 3



STEP 4



STEP 5



STEP 6



Installation

CITROEN C3 PICASSO
CIT-C3PI-5-A



Tailgate Shade Installation

STEP 7

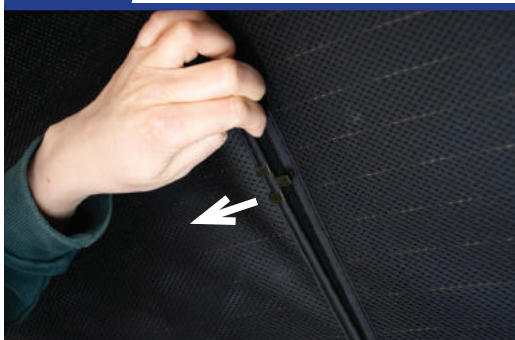


Repeat this whole process for the other side.

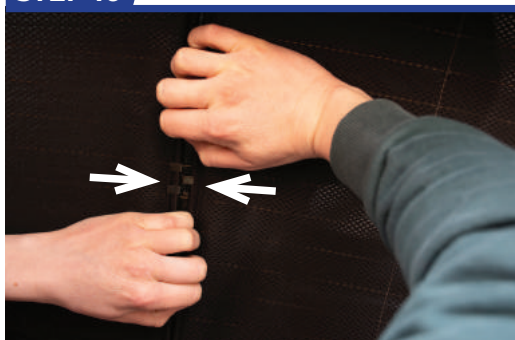
STEP 8



STEP 9



STEP 10



STEP 11

