



XWS006 METALLIJYRSIN / MILLING MACHINE

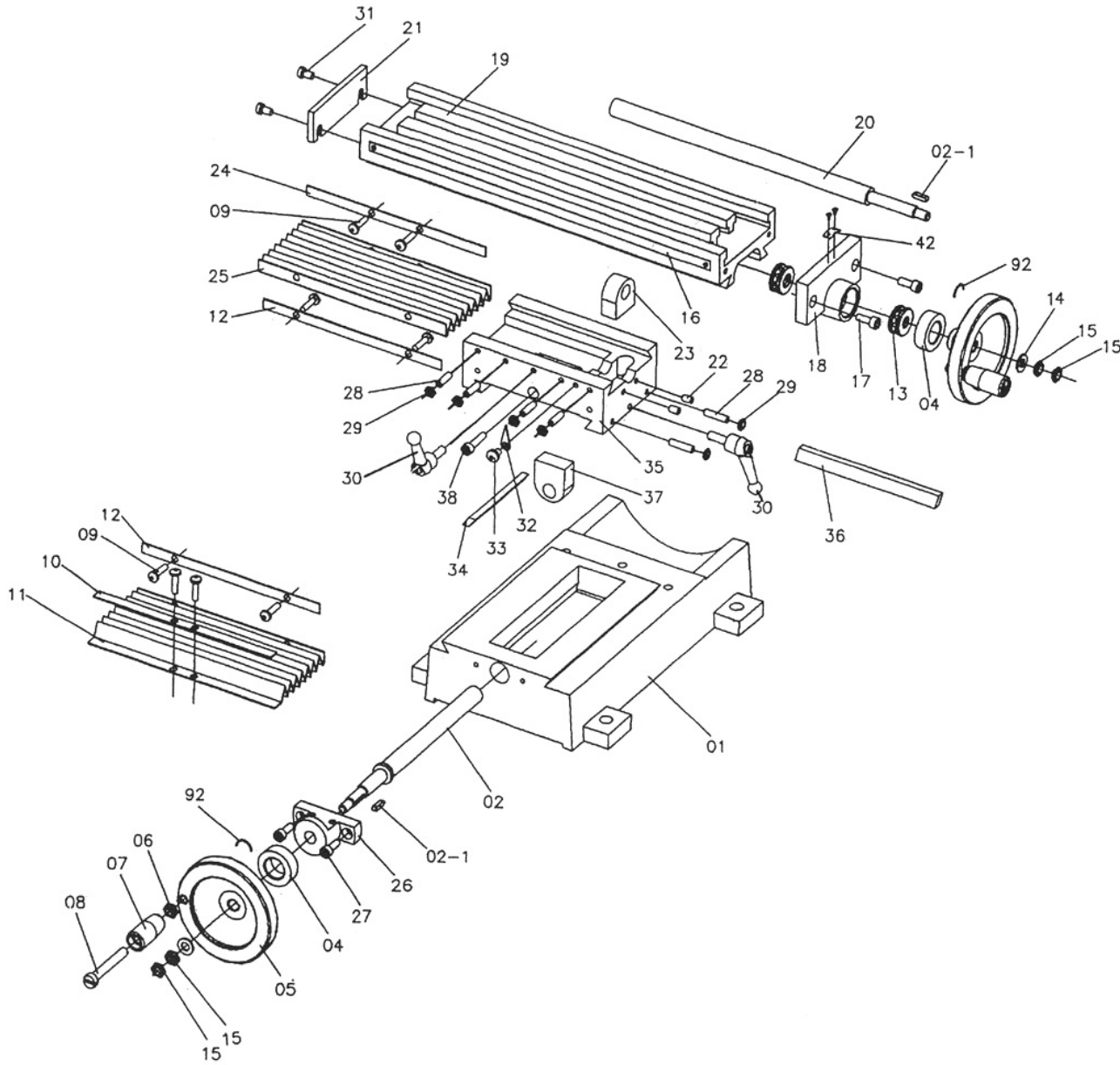
Varaosatunnus / Spare part code XWSV esim. / e.g. XWSV006-12 (-12=pos.no.)

No.	Description
1	Base
2	X-axis feeding screw
2-1	Key
4	Dial
5	Handwheel
6	Nut
7	Knob
8	Screw
9	Cap screw
10	Holding plate (1)
11	Dust guard cover
12	Holding plate (2)
13	Ball bearing
14	Washer
15	Nut
16	Y-axis ruler
17	Cap screw
18	Y-axis bearing seat
19	Working table
20	Y-axis feeding screw
21	End cover
22	Screw
23	Y-axis screw nut
24	Holding plate (3)
25	Dust guard cover
26	Screw seat
27	Cap screw
28	Set screw
29	Nut
30	Handle
31	Screw
32	Guide finger
33	Screw
34	X-axis wedge
35	Saddle
36	Y-axis wedge
37	X-axis screw nut
38	Cap screw
39	Fuselage seat
39-1	Shaft
39-2	Key
40	Spring washer
40-1	Washer
41	Cap screw
42	Guide finger
43	Set screw
44	Ruler

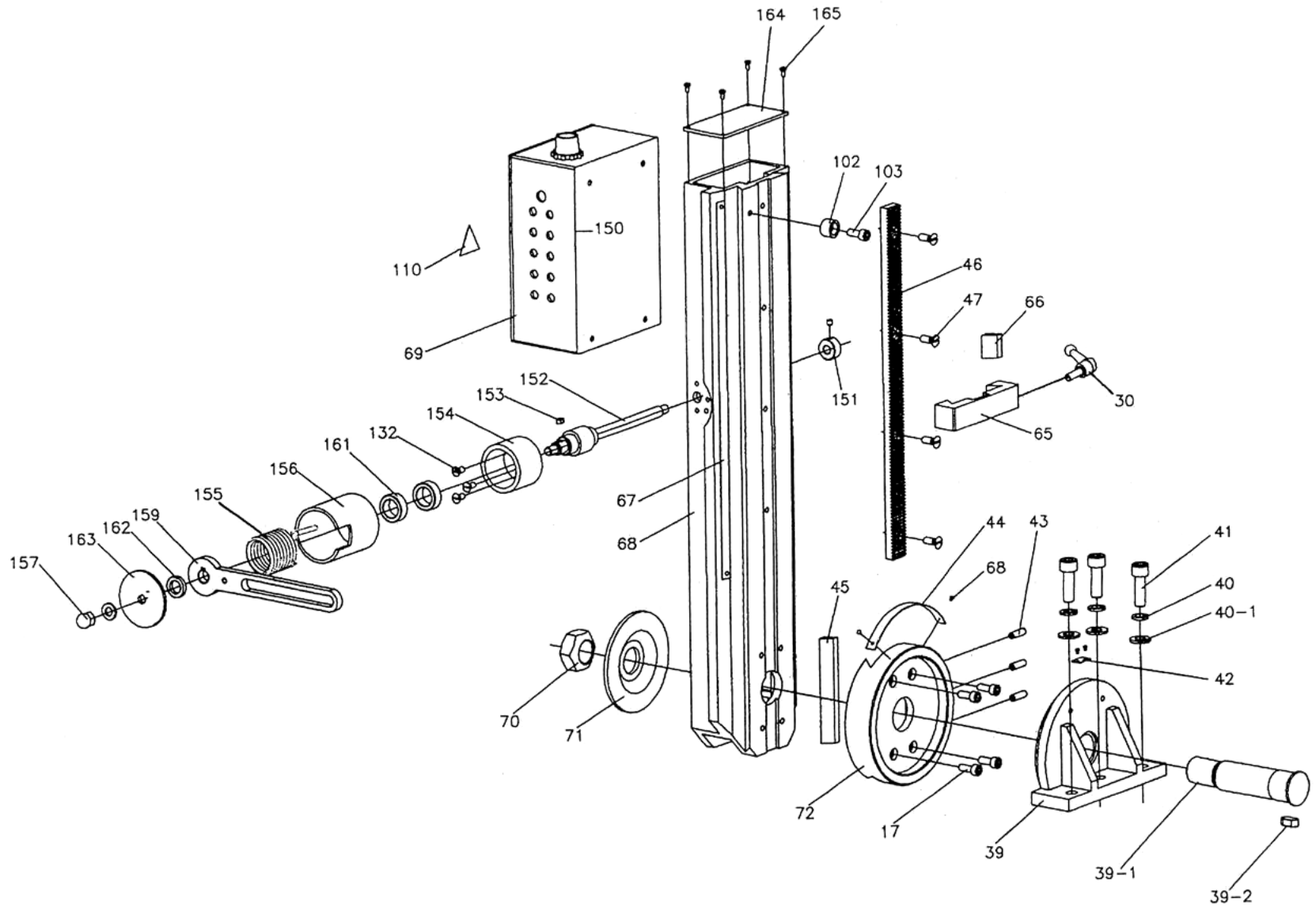
No.	Description
45	Wedge
46	Gear rack
47	Cap screw
48	Name plate
49	Spindle box
50	Pinion
51	Key
52	Bevel gear
53	Retaining ring
54	Ball
55	Spring
56	Screw
57	Handle stock
58	Operating lever
59	Lever cap
60	Cap screw
61	Guide finger
62	Cap screw
63	Spindle box seat
64	Wedge
65	Limit block
66	Wedge
67	Ruler
68	Fuselage
69	Electric box
70	Lock nut
71	Big washer
72	Connecting strut
78	Key
79	Spindle
80	Transmission gear
81	Support block
82	Screw
83	Pin
84	Worm
85	Sleeve
86	Pin
87	Pin
88	Adjustable union
89	Bracket
90	Screw
91	Dial
92	Spring
93	Small handwheel
94	Screw
95	Small shaft
96	Cover

97	Screw
98	Support of dust cover
99	Screw
100	Dust guard
101	Clamp bolt
102	Upper end washer
103	Upper end screw
104	Set screw
105	Spring
106	Ball
107	Handle seat
108	Bolt
109	Knob
110	Warning label
111	Controller
112	Label on controller
113	Shaft (1)
114	Key
115	Internal ring
116	Spacing ring
117	Small shaft
118	Spacing ring
119	Spindle nut
120	Key
121	Cap screw
122	Bearing cover
123	Ball bearing
124	Name plate
125	Fine feeding label
126	Protecting cover
127	Motor
128	Motor gear
129	Internal ring
130	Motor seat
131	Screw

132	Screw
133	Yellow lamp
134	Speed control knob
135	Green lamp
136	Fuse box
137	Emergency stop switch
138	Gear
139	Ball bearing
140	Transmission gear
141	Bar
142	Linking board
143	Set screw
144	Screw
145	H/L label
146	Motor cover
147	Motor connecting flange
148	Screw
149	Warning label
150	PC board
151	Lock sleeve
152	Rotor shaft
153	Key
154	Spring support
155	Torsion spring
156	Cover
157	Nut
158	Prop
159	Supporting shank
160	Screw
161	Washer
162	Internal ring
163	Cover
164	Top cover
165	Screw



Longitudinal axis (Y) • Cross axis (X)



Vertical axis (Z)

Spindle and gear box

