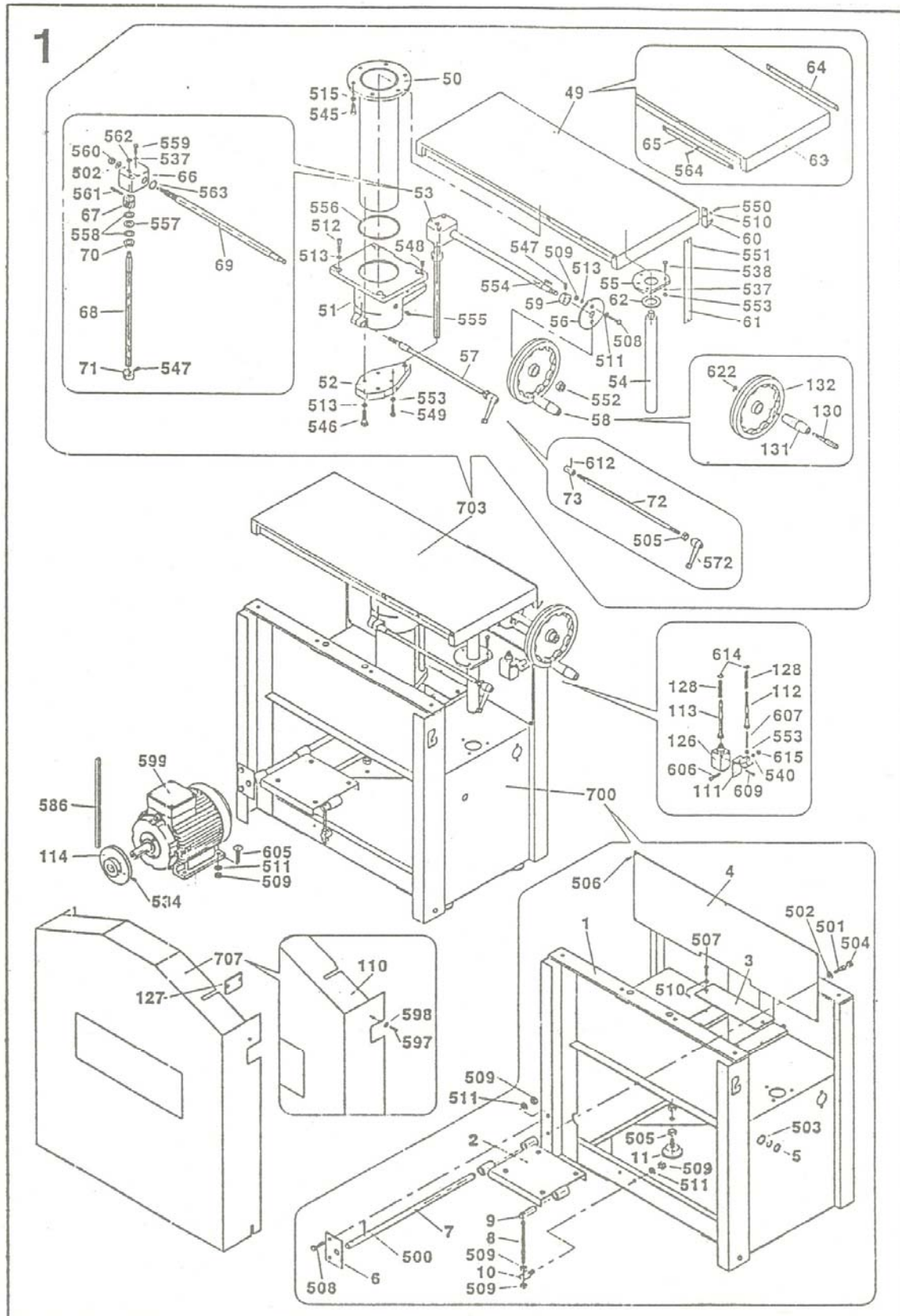


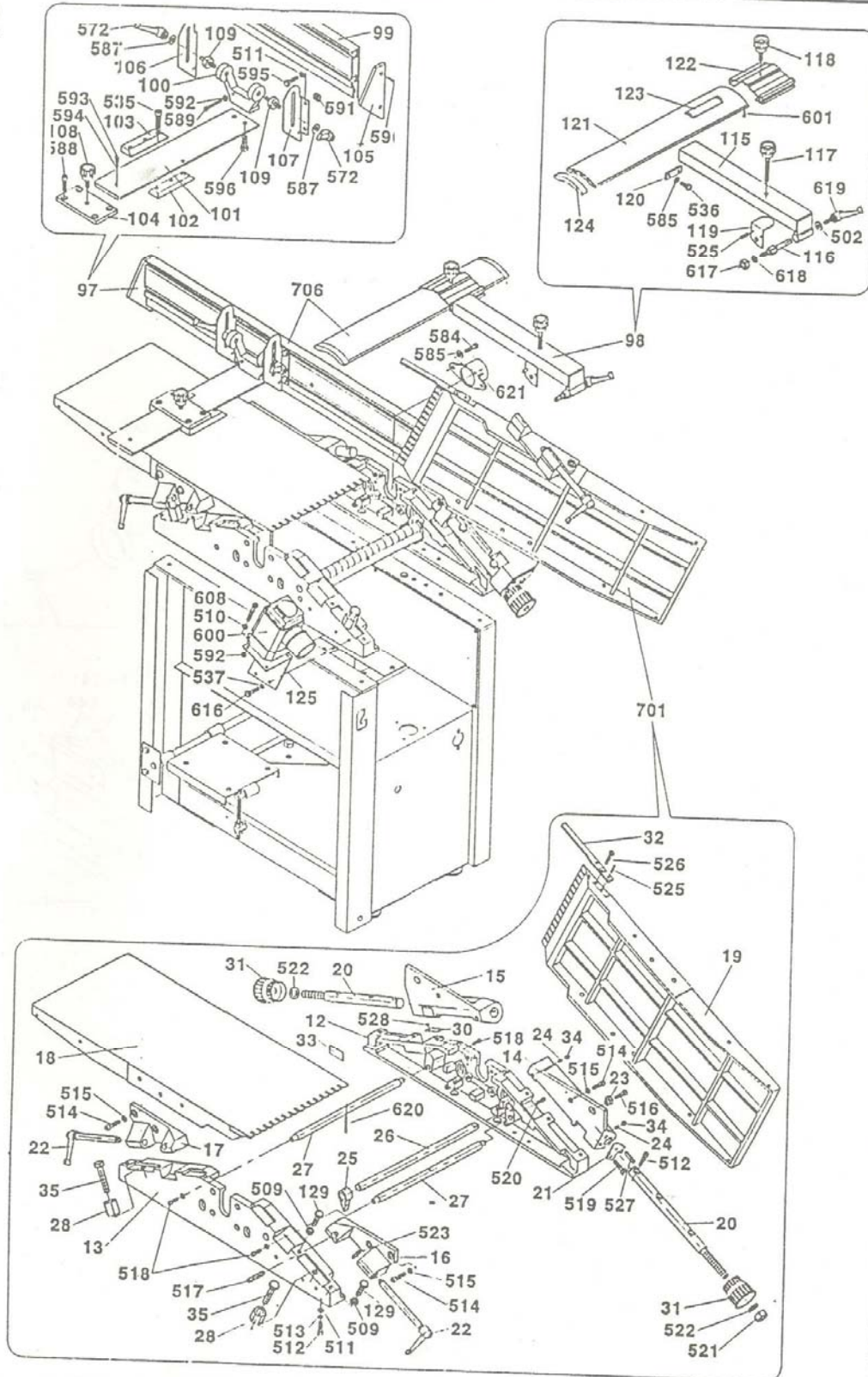


XW021 OIKO/TASOHÖYLÄ 250MM 400V / SURFACE/ROTARY PLANER 250MM

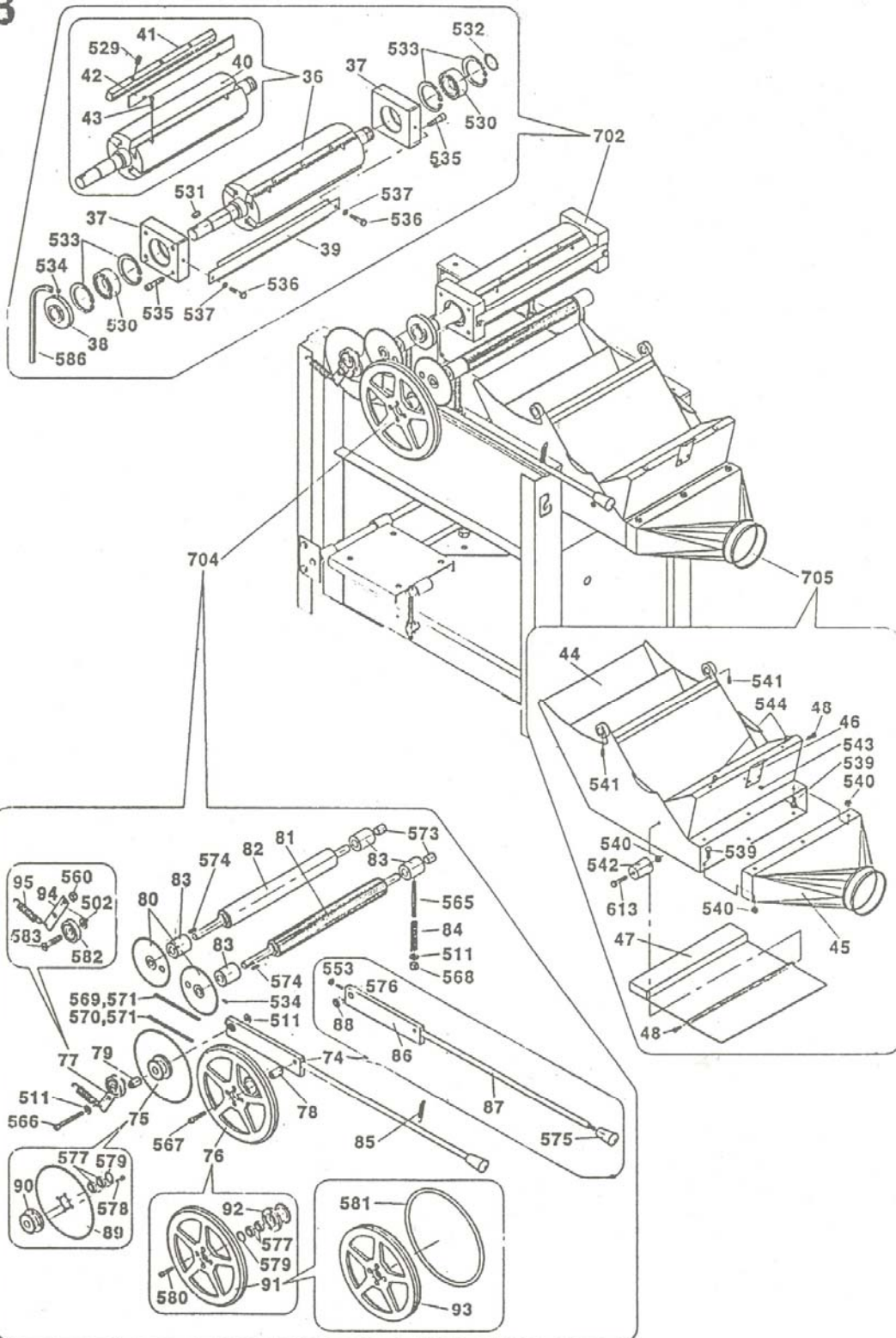
Varaosatunnus / Spare part code XWV esim. / e.g. XWV021-12 (-12=pos.no.)



2



3



NO.	DESCRIPTION	QTY	NO.	DESCRIPTION	QTY
1	Right and left support plate	2	51	Lifting tube bracket	1
2	Plate	2	52	Support base	1
3	Right plate	1	53	Gear assembly	1
4	Bush	1	54	Adjusting bar	1
12	Right cutter block support	1	55	block	1
13	Left cutter block support	1	56	block	1
14	Right adjusting wing	1	57	Locking bar assembly	1
15	Left adjusting wing	1	58	Hand wheel	1
16	Locking block	1	59	"C"ring	1
17	Locking block	1	60	pointer	1
18	Outfeed table	1	61	Depth scale	1
19	Infeed table	1	62	washer	1
20	Adjusting axle	2	63	Thicknessing table	1
21	Metal plate	1	64	plate	1
22	Locking handle assembly	2	65	plate	1
23	Eccentric bush	2	66	Gear box	1
24	Screw M8X8	2	67	Gear	1
25	Kick block	15	68	Guide screw	1
26	Axis axle	1	69	Gear axle	1
27	Support axle	1	70	bush	1
28	Hex nut M10	4	71	Locking ring	1
30	Scale	1	72	Locking handle	1
31	Adjusting wheel	1	73	Locking block	1
32	Locating plate	1	74	Control handle assembly	1
33	scale	1	75	Sprocket assembly	1
35	Hex blot M10X50	2	76	Wheel assembly	1
36	Cutter block assembly	1	77	Wheel assembly	1
37	Ball bearing bush	2	78	bush	1
38	Cutter block pulley	1	79	bush	1
39	Protective plate	1	80	sprocket	2
40	Cutter block	1	81	Driving roller	1
41	Blade locking block	3	82	Pressing roller	1
42	blade	3	83	Bush	4
43	spring	6	84	Spring	4
44	Dust chute	1	85	Spring	1
48	screw	2	86	Connecting plate	1
49	Thicknessing table assembly	1	87	Control handle	1
50	Lifting tube	1	88	bush	1

NO.	DESCRIPTION	QTY	NO.	DESCRIPTION	QTY
89	Sprocket.	1	503	"C"ring ϕ 20	1
90	Chain wheel	1	506	Screw M5X12	5
91	wheel	1	507	Screw M5X15	4
92	Chain wheel	1	508	Hex bolt M8X20	4
93	Wheel	1	509	Hex nut M8	20
94	Plate	1	510	Washer ϕ 5	4
95	Spring	1	511	Washer ϕ 8	14
97	Guiding fence	1	512	Socket cap screw M8X20	4
98	Cutter block protective fence	1	513	Spring washer ϕ 8	22
99	Fence plate	1	514	Socket cap screw M8X16	4
100	Supporting plate	1	515	Spring washer ϕ 8	11
101	Guiding block	1	516	Socket cap screw M8X30	2
102	Right metal plate	1	517	Pin A6X40	2
103	Left metal plate	1	518	Socket cap screw M6X35	4
104	Connecting plate	1	519	Hex bolt M8X12	2
105	Protective plate	2	520	Socket cap screw M6X35	1
106	Left sliding block	1	521	Hex nut M16	4
107	Right sliding block	1	522	Washer ϕ 16	2
108	handle	1	523	"C"ring ϕ 12	4
109	Bolt	2	525	Pin ϕ 5X16	1
110	Protective cover	1	526	Screw M6X15	20
112	Locating bar	1	527	Pin ϕ 6X10	2
113	Locating bar	1	529	Bolt M6X15	20
114	Motor pulley	1	530	Ball bearing	2
115	U-shaped metal tube	1	531	Pin 6X25	1
116	Locking handle	1	532	"C"ring ϕ 25	1
117	Long locking handle	1	533	"C"ring ϕ 52	4
118	Short locking handle	1	534	Socket cap screw M6X10	3
119	Angle iron	1	535	Socket cap screw M6X8	8
120	Support plate	1	536	Screw M5X8	2
121	Protective plate	1	537	Spring washer ϕ	13
122	U-shaped bracket	1	538	Screw M6X25	3
123	Locking plate	1	539	Hex bolt M6X15	6
124	Plastic insert	2	540	Hex nut M6	12
125	Switch mounting plate	1	541	Screw M3X10	2
128	Spring	2	542	Support cylinder	1
129	Hex bolt M6X25	4	544	Anti-vibration washer	1
131	Handle assembly	1	545	Socket cap screw M8X16	6
132	Hand wheel	1	546	Socket cap screw M8X30	8
502	Washer ϕ 10	2	547	Screw M8X12	1

NO.	DESCRIPTION	QTY	NO.	DESCRIPTION	QTY
548	Screw M6X12	4	594	Spring washer ϕ 5	1
549	Socket cap screw M6X12	18	595	Hex bolt M8X16	4
550	Screw M4X10	2	596	Socket cap screw M6X10	6
551	Screw M4X6	2	599	Motor	1
552	Hex nut M12	2	600	Chang-over handle	1
553	Washer ϕ 6	1	601	Rivet ϕ 3X5	2
554	Anti-vibration bar	1	605	Hex bolt M8X25	4
555	Lubricating injection hole	1	606	Hex bolt M6X45	1
556	Seal	1	607	Bolt M6X45	1
557	Ball bearing	2	608	Screw M6X25	4
558	Ball bearing	2	613	Socket cap screw M6X18	2
559	Hex bolt M6X65	2	614	"C"ring ϕ 6	2
560	Hex nut M10	6	700	Base assembly	1
561	Pin ϕ 5X30	1	701	Planning table assembly	1
562	"C"ring ϕ 10	1	702	Cutter block assembly	1
563	"C"ring ϕ 18	1	703	Thicknessing table assembly	1
564	Screw M4X10	2	704	Thicknessing clutch assembly	1
565	Bolt	4	705	Extraction system assembly	1
566	Socket cap screw M8X70	1	706	Fence assembly	1
567	Roll		707	Protective cover assembly	1
568	Hex nut M8	4			
569	chain	1			
570	chain	1			
571	chain	1			
573	Axle bush	8			
574	Pin 5X16	2			
575	Handle	1			
577	Ball bearing	2			
578	Screw M6X10	4			
579	"C"ring ϕ 22	2			
580	Screw M6X10	4			
581	Wheel rubber belt	1			
582	Ball bearing	1			
583	pin	1			
586	V-belt	1			
587	Washer ϕ 10	2			
588	Socket cap screw M6X20	4			
589	Hex bolt M5X40	1			
590	Screw M5X40	4			
591	Nut M8	4			
592	Hex nut M6X20	4			
593	Socket cap screw M5X8	1			