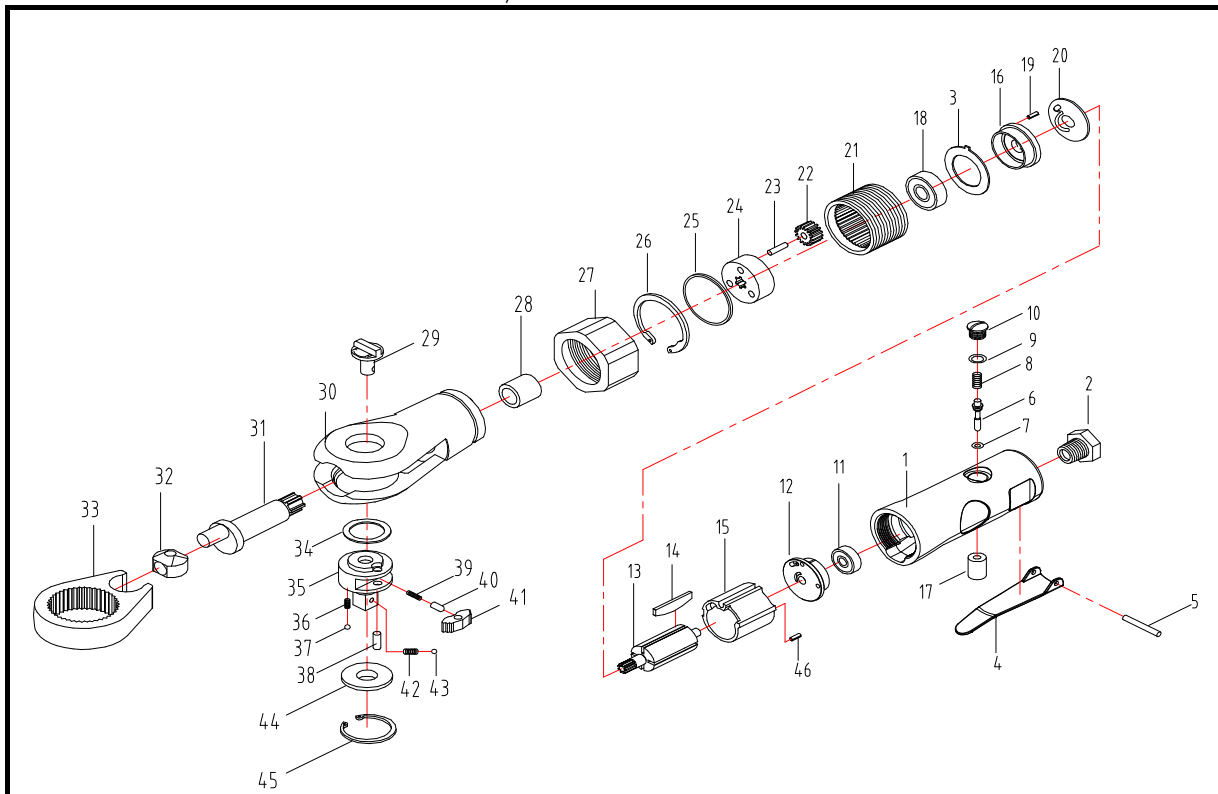


## MEG5055 1/4" Air Ratchet Wrench



NO.	PART NO.	ASSY NO.	DESCRIPTION	Q' TY	NO.	PART NO.	ASSY NO.	DESCRIPTION	Q' TY
*1	351-01A-AE	A	Housing	1	30	351-30-A		Ratchet Housing	1
2	150-02-A		Air Inlet	1	31	351-31-A		Crank Shaft	1
3	351-03-A		Washer	1	32	151-24-A		Diver Bushing	1
4	351-04-A		Throttle Lever	1	33	151-27-A		Ratchet Yoke	1
5	150-05-A		Trigger Pin	1	34	151-03-A		Washer	1
6	151-06-A		Valve Stem	1	*35	151-30-B	B	1/4"Ratchet Anvil	1
7	150-07-A		O-Ring	1	36	151-35-A		Spring	2
8	150-08-A		Spring	1	37	151-28-A		Steel Ball	2
9	150-11-A		O-Ring	1	38	151-34-A		Pin	1
10	150-09-A		Valve Plug	1	39	660-26-A		Spring	1
11	151-11-A		Bearing	1	40	660-25-A		Sleeve	1
12	275-12-A		End Plate	1	41	151-33-A		Ratchet Pawl	1
13	151-14-A		Rotor	1	*42	151-45-B	B	Spring	1
14	151-15-A		Rotor Blade	4	*43	151-28-A	B	Steel Ball	1
15	275-14-A		Cylinder	1	44	151-36-B		Washer	1
16	151-16-A		Front Plate	1	45	151-37-A		Retainer Ring	1
*17	251-37-A	A	Valve Bushing	1	46	2050-38-A		Pin	1
18	150-28-A		Bearing	1	NS-A	A351-01		Housing Assy A	1
19	151-40-A		Pin	1	NS-B	B151-30		1/4"Ratchet Anvil Assy B	1
20	151-43-A		Washer	1					
21	151-21-A		Thread Ring Gear	1					
22	151-18-A		Gear	3					
23	151-19-A		Pin	3					
24	151-20-A		Gear Plate	1					
25	351-25-A		Washer	1					
26	351-26-A		Retainer Ring	1					
27	351-27-A		Locking Nut	1					
28	351-28-A		Bushing	1					
29	351-29-A		Reverse Switch	1					

The parts with "\*" mark can not be ordered individually and need to be ordered based on the assembly number. 20120308